

From the Maker of the Best Movie
Player, PowerDVD and Award-Winning
Video Editing Software, PowerDirector.



CyberLink
PhotoDirector ²⁰¹¹

Turn Photos into Masterpieces



Table of Contents

- Product Introduction
- PhotoDirector 2011 Beta Features
 - Ultimate Workflow Tool
 - Import and Manage
 - Powerful Management Tools
 - Select and Perfect
 - Nondestructive Environment
 - Amazing Adjustment Tools
 - Cutting Edge RAW Decoding
 - Export and Share
 - DirectorZone
 - Facebook, Flickr and YouTube
- System Requirements
- Format Support
- Language Support

Note: Official release version features are subject to change



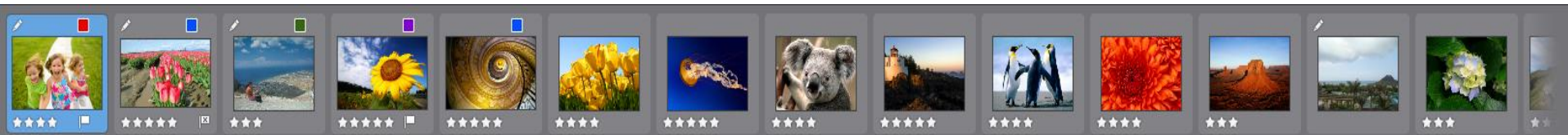


Introducing PhotoDirector 2011 Beta

Perfecting Your Photos Through Every Step

- Most Intuitive **Workflow**
- **Import** and **Manage**
- **Select** and **Perfect**
- **Export** and **Share**

Turn Photos into Masterpieces!

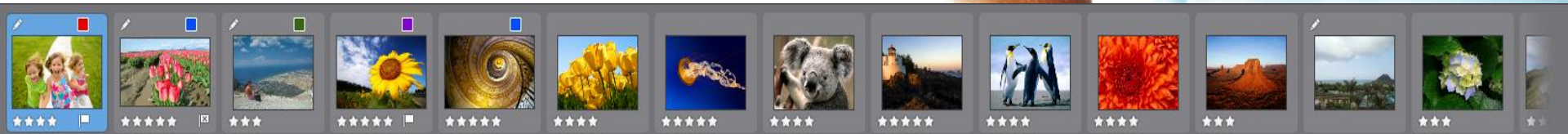




For Passionate Photographers

Do you love photography?

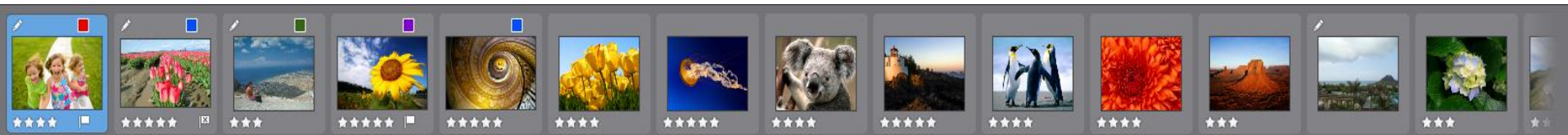
- Try PhotoDirector 2011 - engineered to deliver spectacular performance to photographers who are serious about their hobby





Completing multimedia experience from video to photo

- **PhotoDirector 2011** completes CyberLink's leading multimedia creativity products, extending from award-winning video editing software, PowerDirector, to now professional level photo workflow application, PhotoDirector



PhotoDirector 2011 Beta Key Features



Most Intuitive **Workflow**

Import & Manage

Select & Perfect

Export & Share

Note: Official release version features are subject to change



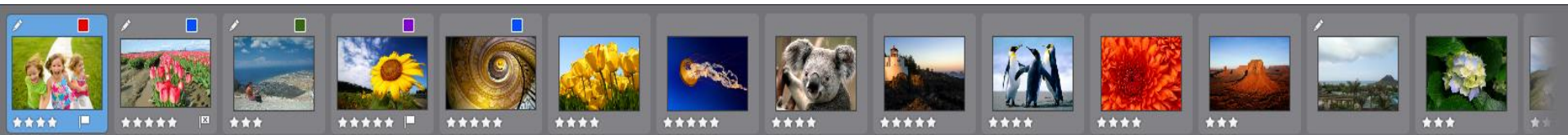


Professional Photo Workflow Tool

Perfecting Every Step



- PhotoDirector is designed specifically to smooth the flow from import, manage, enhance to final output





Import and Manage

- **Import** photos to powerful but easy to use library with advanced **searching, sorting, tagging** and **flagging** tools for easy management and selection





Import and Manage

Manage Massive Libraries

- PhotoDirector automatically creates **Smart Collections** based on rankings, recently imported files and so much more
- Create your own **Smart Collections** based on your preferences for super fast photo sorting



Wide range of RAW Format Support

Camera Brand	RAW File Format
Canon	TIF, CR2, CRW
Casio	BAY, RAW, DNG
Nikon	NEF, NRW
Olympus	ORF, RAW
Kodak	KDC, DCR
Pentax	PEF, RAW
Minolta/ Konica Minolta	MRW, JPG, MDC
Adobe DNG	DNG
Sony	ARW, SRF, SR2
Sigma	X3F

Camera Brand	RAW File Format
Epson	ERF
Hasselblad	3FR, FFF
Imacon	FFF
Leaf	MOS
Leica	RWL, RAW, DNG
Panasonic	RAW, RW2
Samsung	SRW, PEF, DNG, RAW
Phase One	TIF
Contax	RAW, IA
Mamiya	MEF
Ricoh	DNG

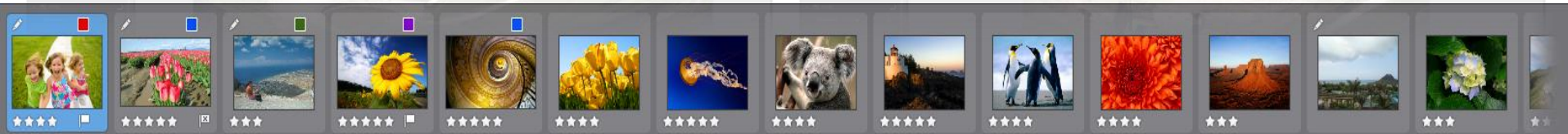




Select and Perfect

Several Different Viewing Modes

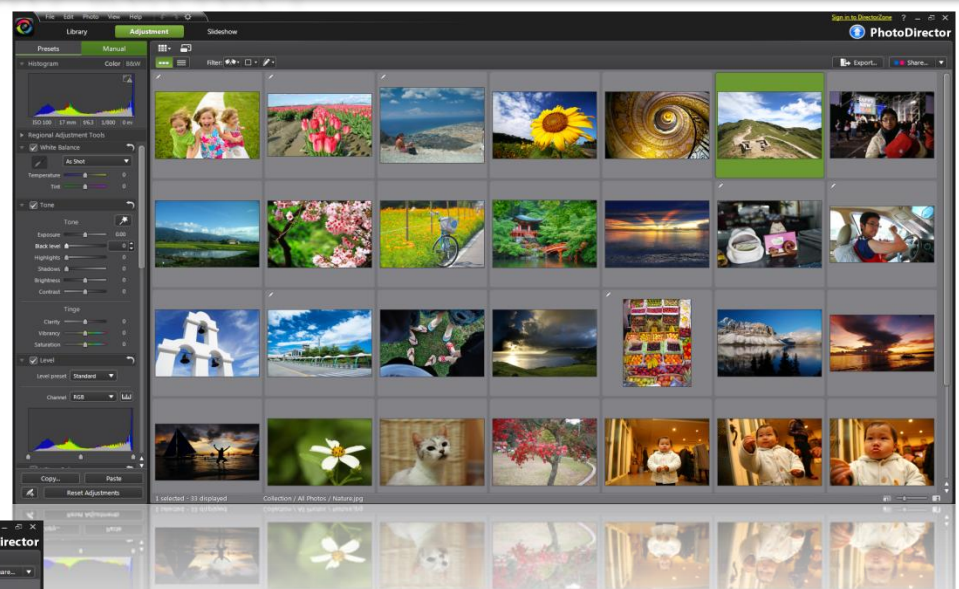
- With a huge photo library it is crucial to have flexibility in viewing images – PhotoDirector has all the angles covered!



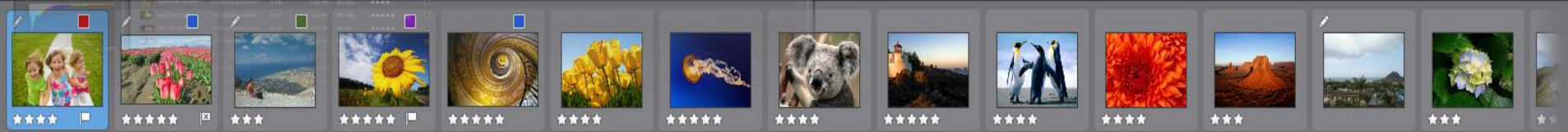
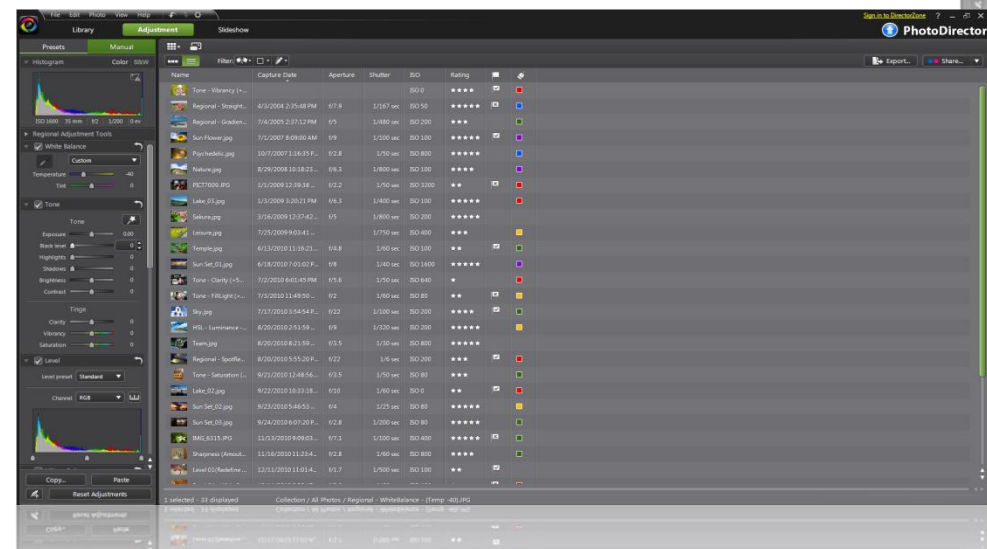


Select and Perfect

- Browser Mode – Use Browser Mode when you need to sort through dozens of photos



- List View – Displays important Metadata embedded in the image as well as tags, labels, flags and rankings





Select and Perfect

- Lightbox Mode (show multiple) is the perfect option when you need to select the best photo out of several similar images

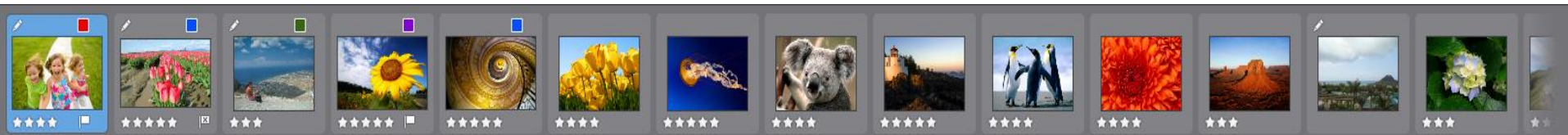




Select and Perfect

Let Your Creativity Flow

- PhotoDirector is a nondestructive editing environment – your original is always preserved when editing, so explore your creativity!





Select and Perfect

Adjustment History



- Easily go back an unlimited number of revision steps with **Adjustment History**

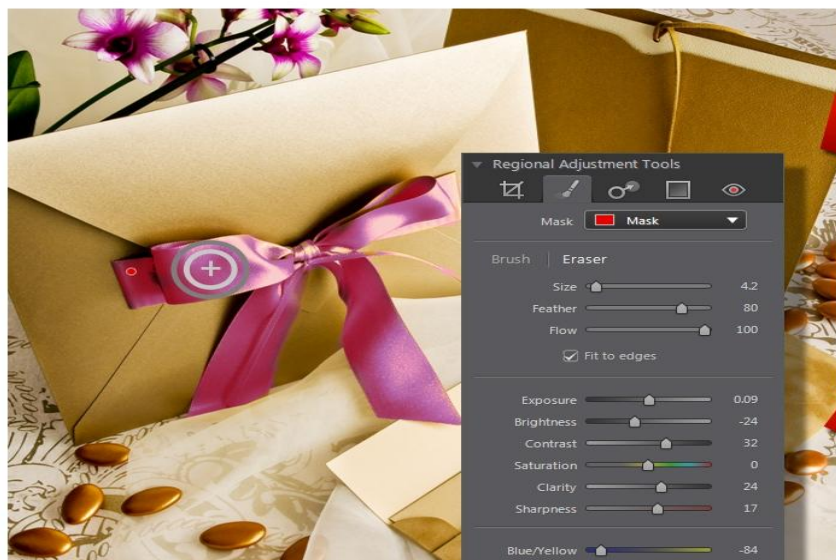




Select and Perfect

Adjustment Brushes

- Target specific areas of a photo for the most **precise touch ups**

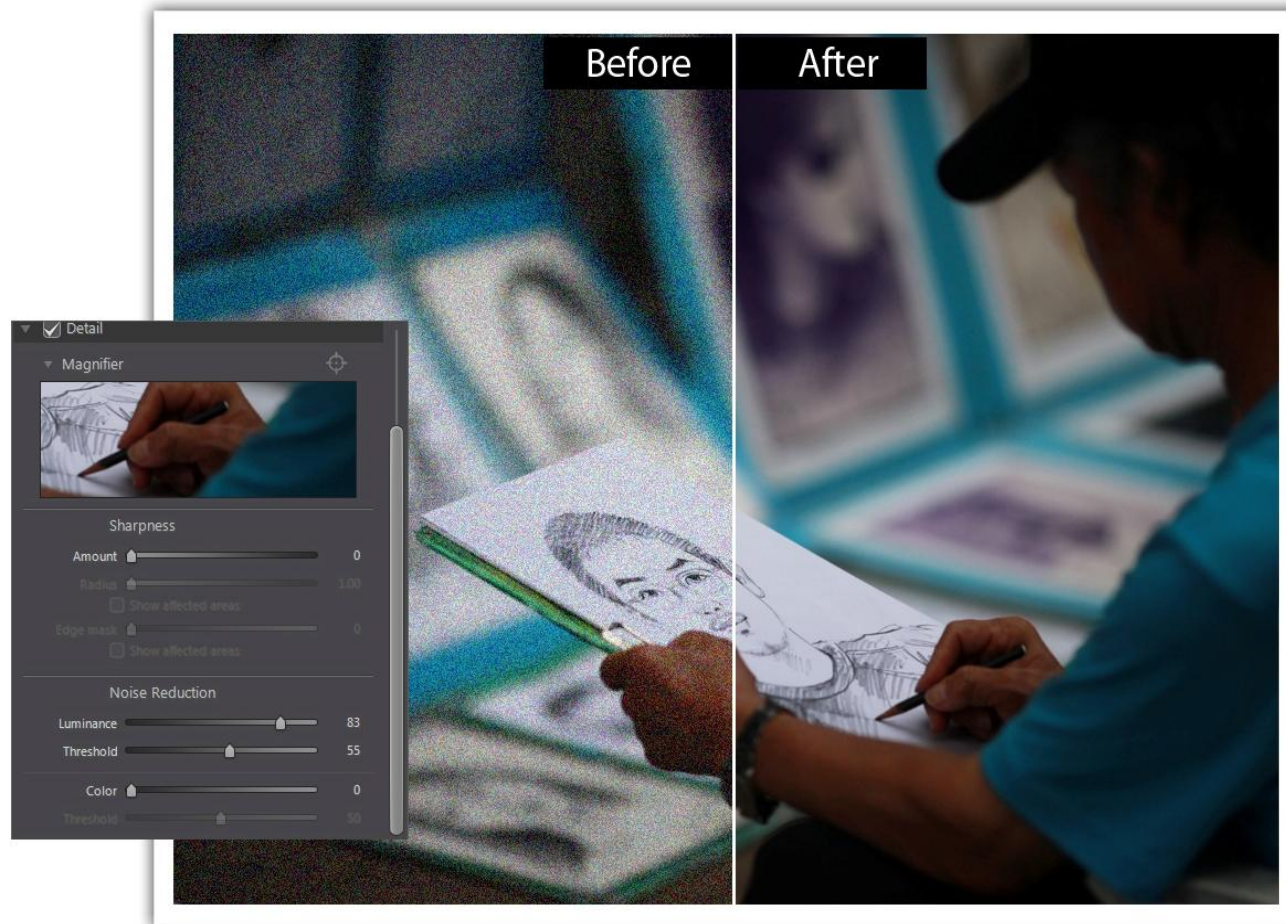


- Try ***Fit to Edges*** for super accurate results



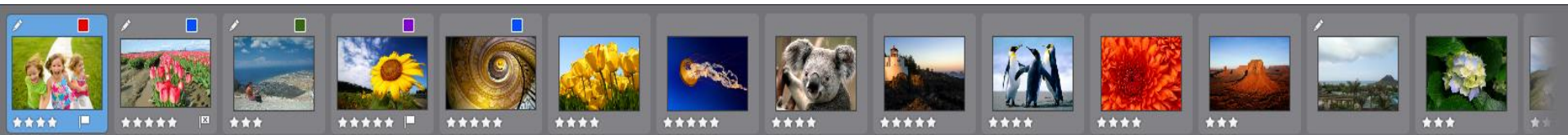


Select and Perfect



Noise Reduction

The noise reduction tool is an **absolute necessity** for anyone shooting in low light or high action settings

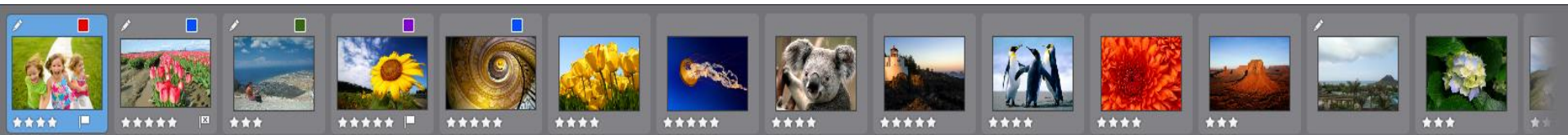
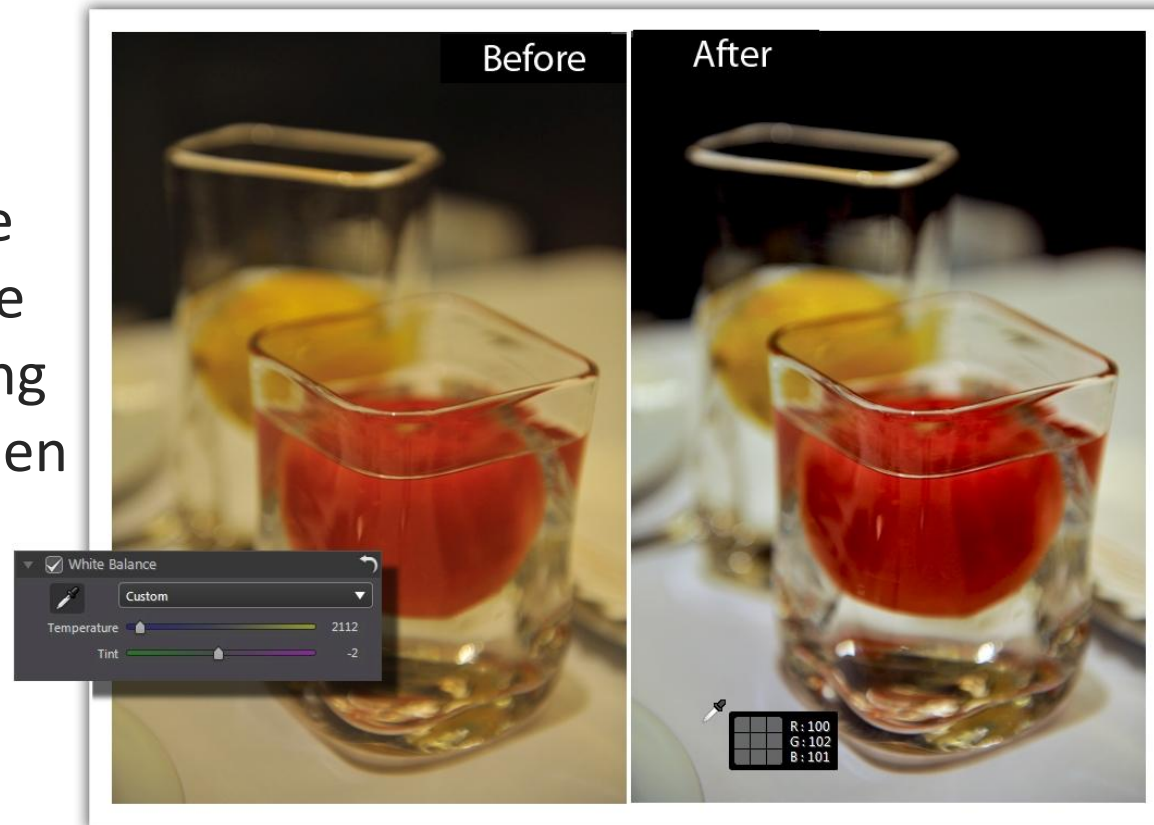




Select and Perfect

White Balance

- The **ideal tool** to improve your photos under a huge variety of different lighting conditions, especially when shooting **RAW** files

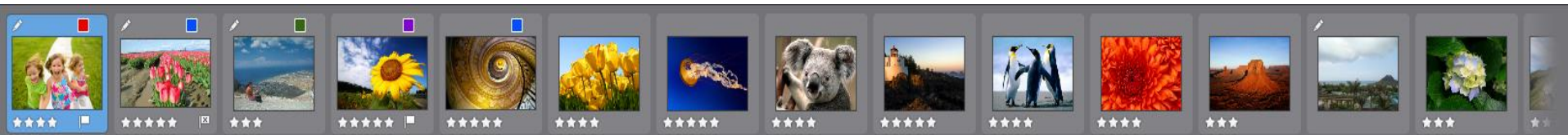
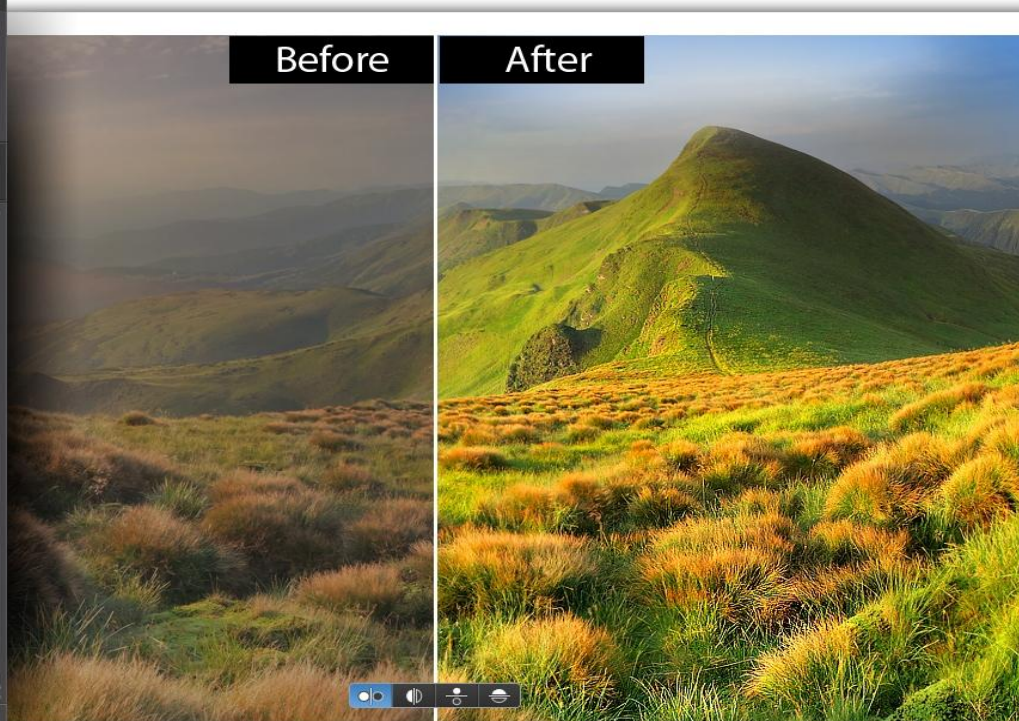
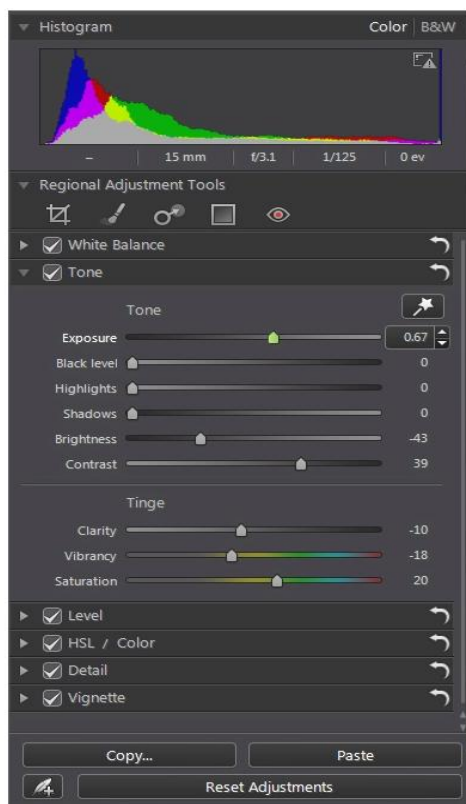




Select and Perfect

Tone

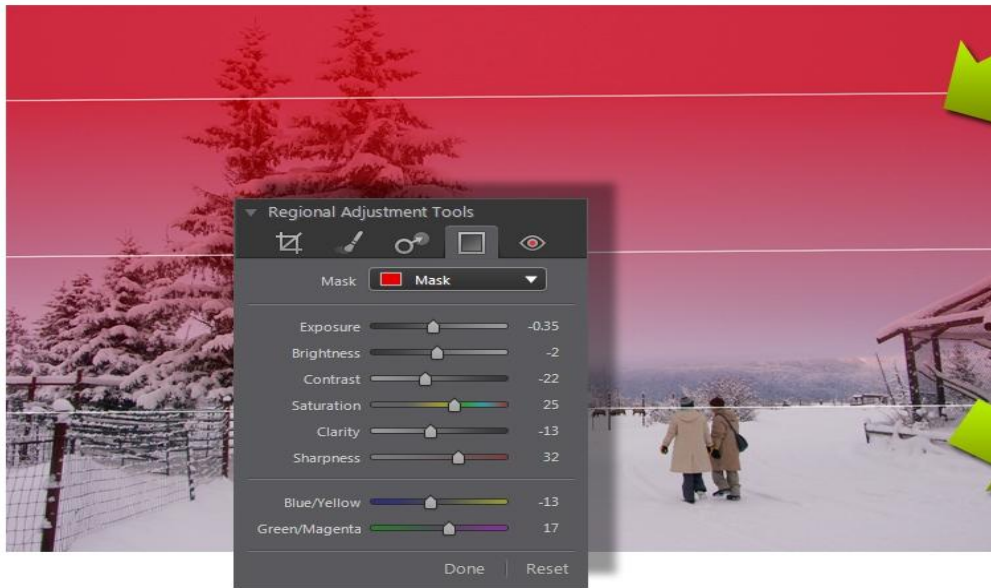
- Select **Auto Tone** or **manually** adjust the **brightness** based on areas that are over/under exposed for stunning results





Select and Perfect

Gradient Mask

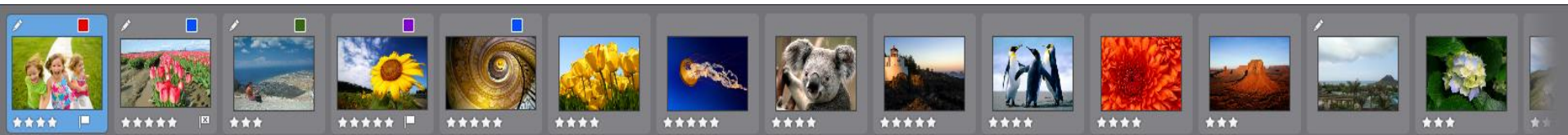


Before



After

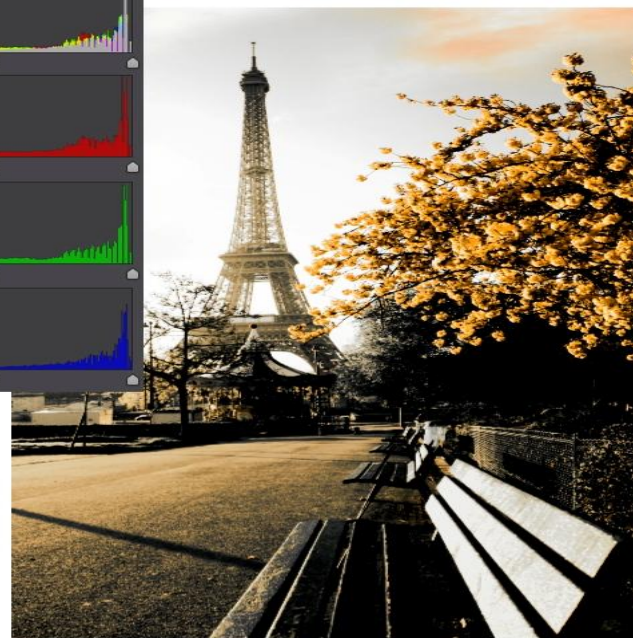
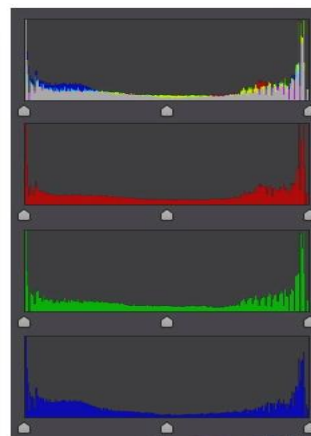
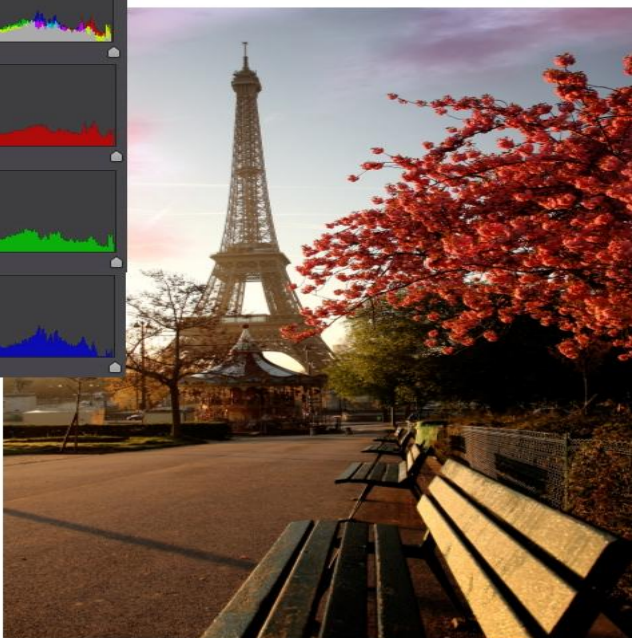
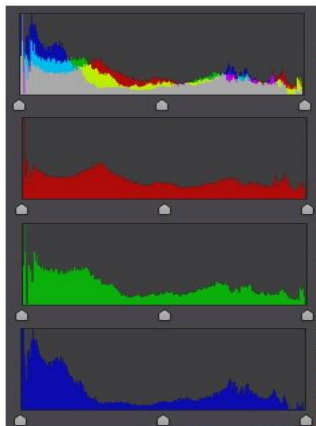
- PhotoDirector's Gradient Mask is the **perfect tool** for applying adjustments **gradually** over a large area of an image





Select and Perfect

Levels



- PhotoDirector's Levels tools gives you **the most control** over the **tonal range** of an image. **Redefine** the color levels by adjusting the Red, Green and Blue levels of your photos.

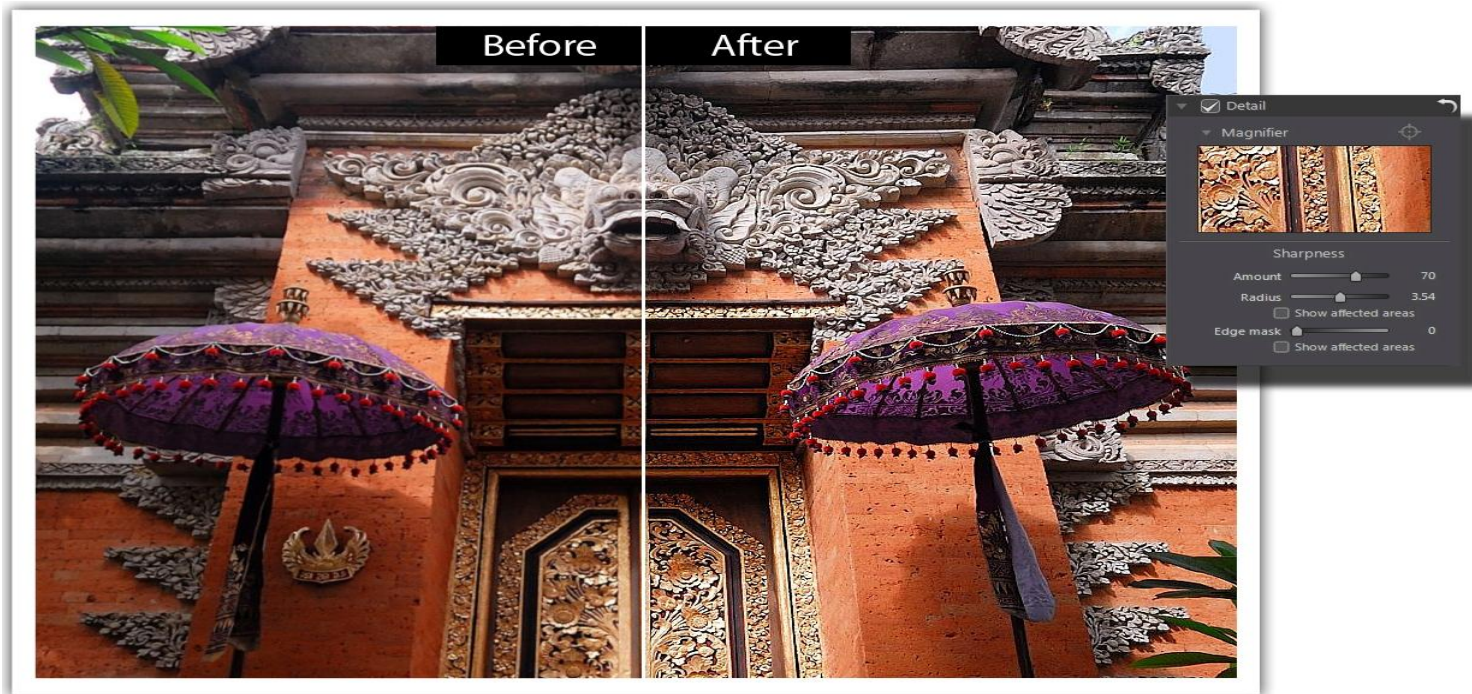




Select and Perfect

Sharpness

- Touch up your images so they look as **crisp** and **clear** as possible



- Select the **Edge Mask** feature to tell PhotoDirector **exactly** which areas you want to sharpen and which areas you want untouched

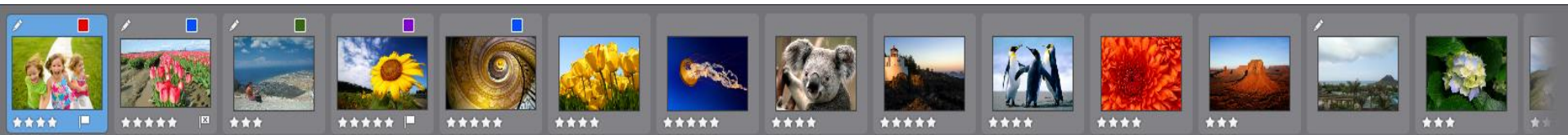
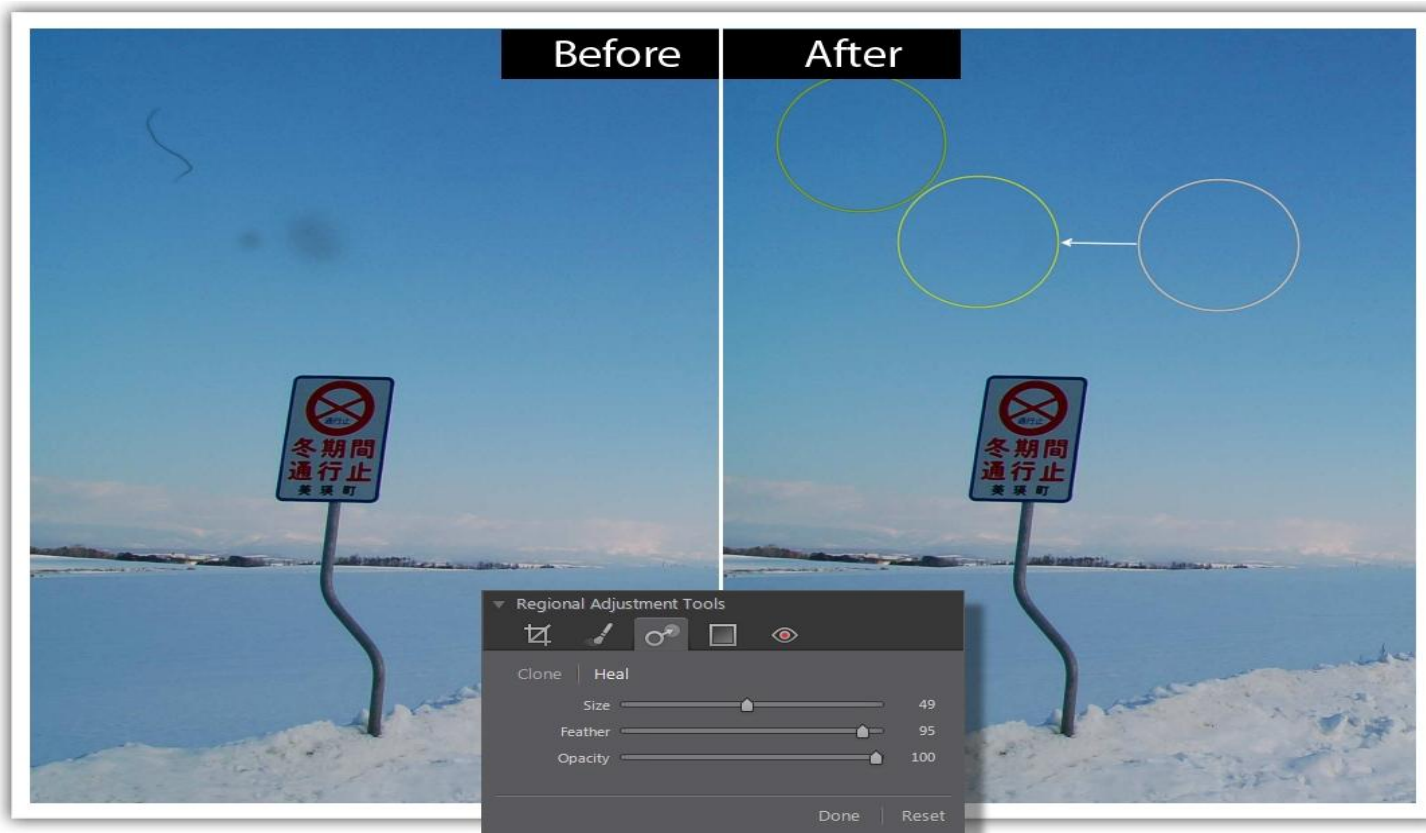




Select and Perfect

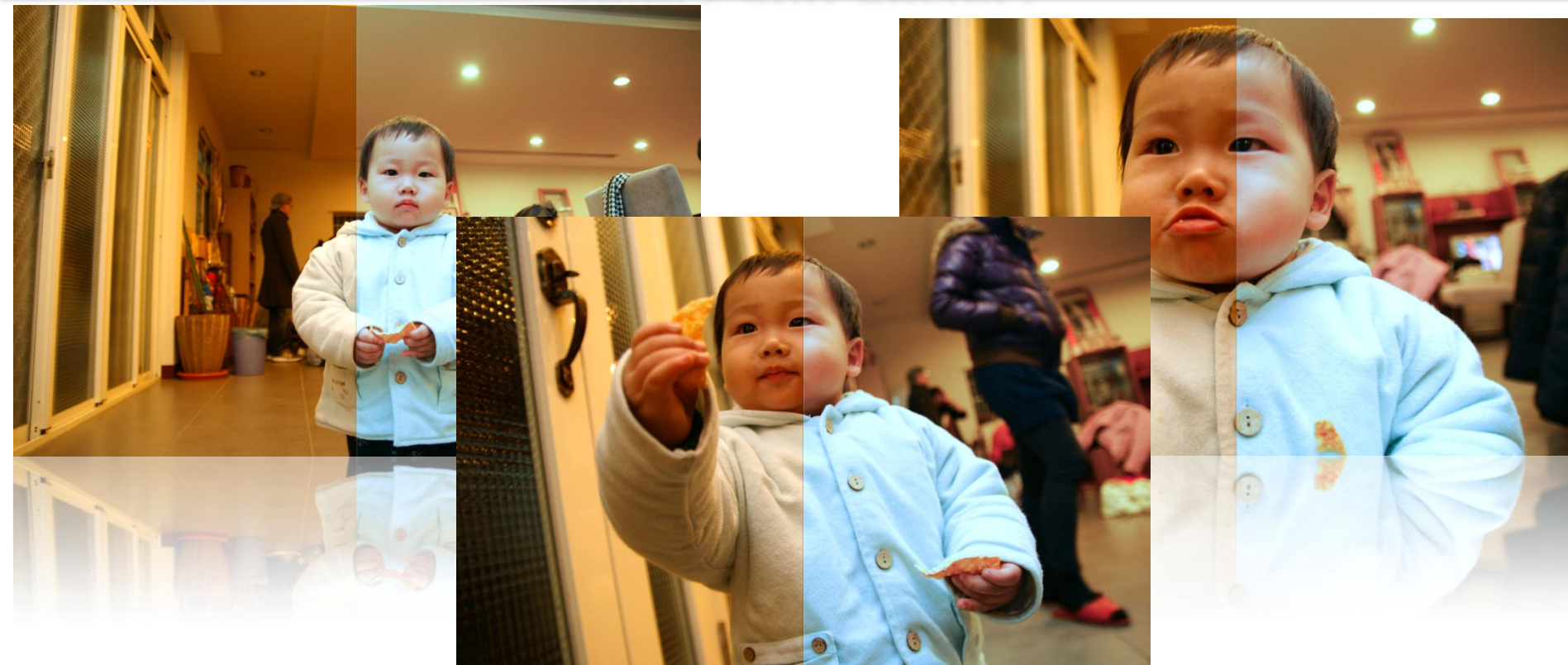
Spot Removal

- Don't let a spot or blemish ruin your **beautiful photos** again





Select and Perfect



- Save considerable time when processing batches of photos where the same adjustment is needed so you can spend time doing what you love best – taking photos!





Select and Perfect

Cutting Edge RAW Decoding Technology

- Native support for RAW files from Canon and Nikon cameras – **spectacular** color that is a **clear perfect** match!



Nikon NX2



PhotoDirector 2011

*PhotoDirector licenses the SDK from Canon and Nikon for decoding RAW files





Select and Perfect

Cutting Edge RAW Decoding Technology

- Competitor A clearly produces a very **dull** and **dark** image with the same RAW file. Get the absolute best out of your RAW files with PhotoDirector!

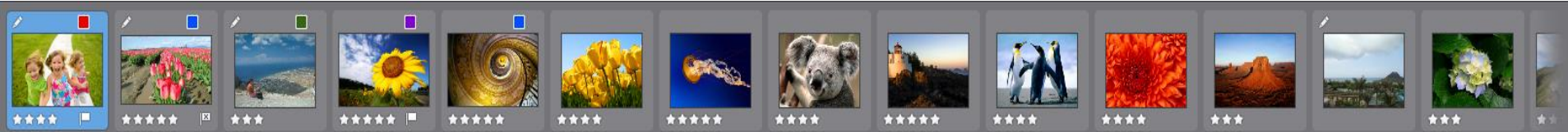


Nikon NX2



Competitor A

*PhotoDirector licenses the SDK from Canon and Nikon for decoding RAW files

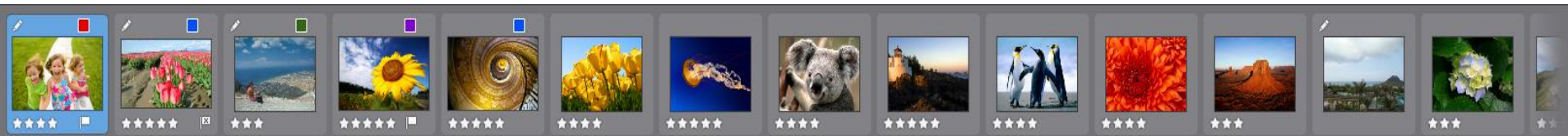




Select and Perfect

Multiple Ways to Compare

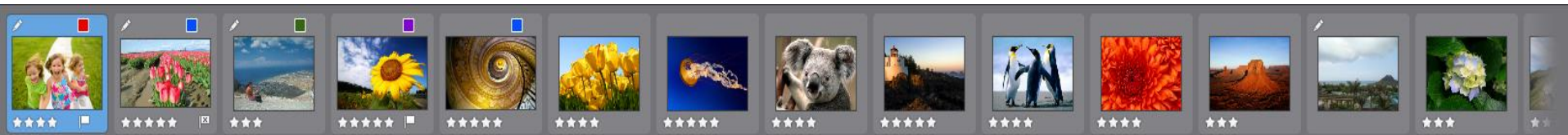
- Different photos require different modes to **compare** the effect and to select the **best adjustment** setting



DirectorZone.com – The Cloud Service for Photographers

- [illegible]

directorZone





Export and Share

So Many Ways to Share

- Share your photos directly to **Facebook** and **Flickr** or create HD slideshow videos up to 1080p and upload them to **YouTube**





System Requirements

Screen Resolution

- 1024 x 768, 16-bit color or higher

Operating System

- Microsoft Windows 7 (32bit & 64bit)/Microsoft Windows Vista® Home Premium, Business, Ultimate, or Enterprise (32 bit & 64 bit)/Microsoft Windows XP with Service Pack 3

Memory

- Minimum 2 GB is required

CPU

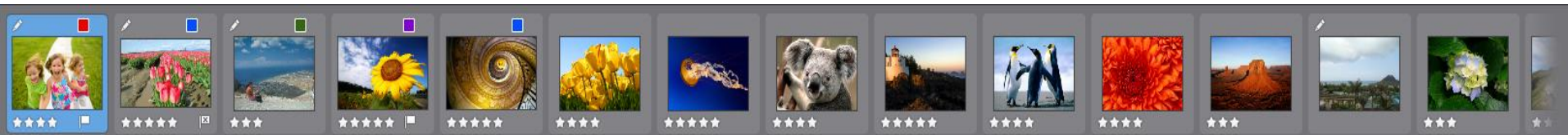
- Intel Pentium D 3.0 GHz CPU with hyper-threading or equivalent AMD CPU is minimal

Graphics Processor (GPU)

- Graphics card with 128MB VRAM and above

Hard Disk Space

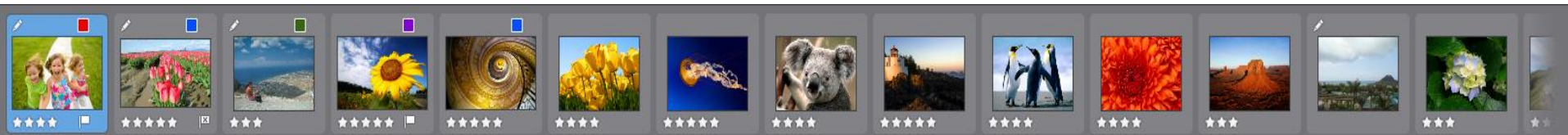
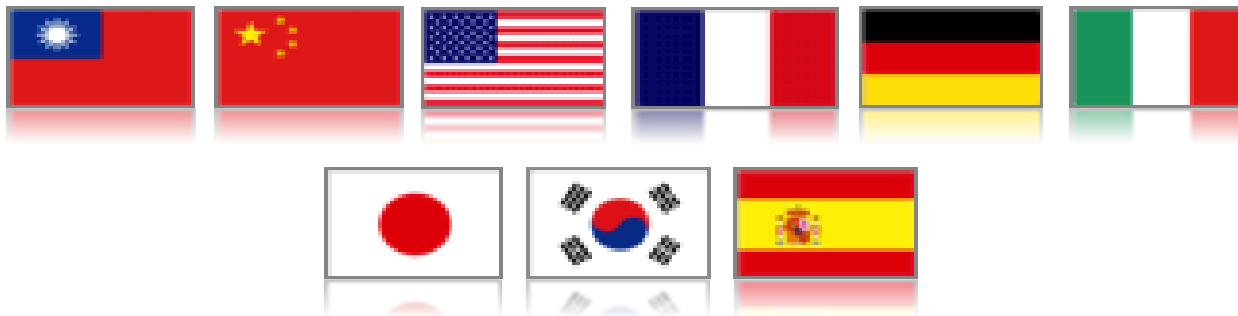
- 1 GB of disk space for application and documentation





Language Support

- Supported Languages:
 - Chinese Traditional, Chinese Simplified , English, French, German, Italian, Japanese, Korean, Spanish



Thank you

A red swoosh underline that starts under the 'T' and ends under the 'u'.